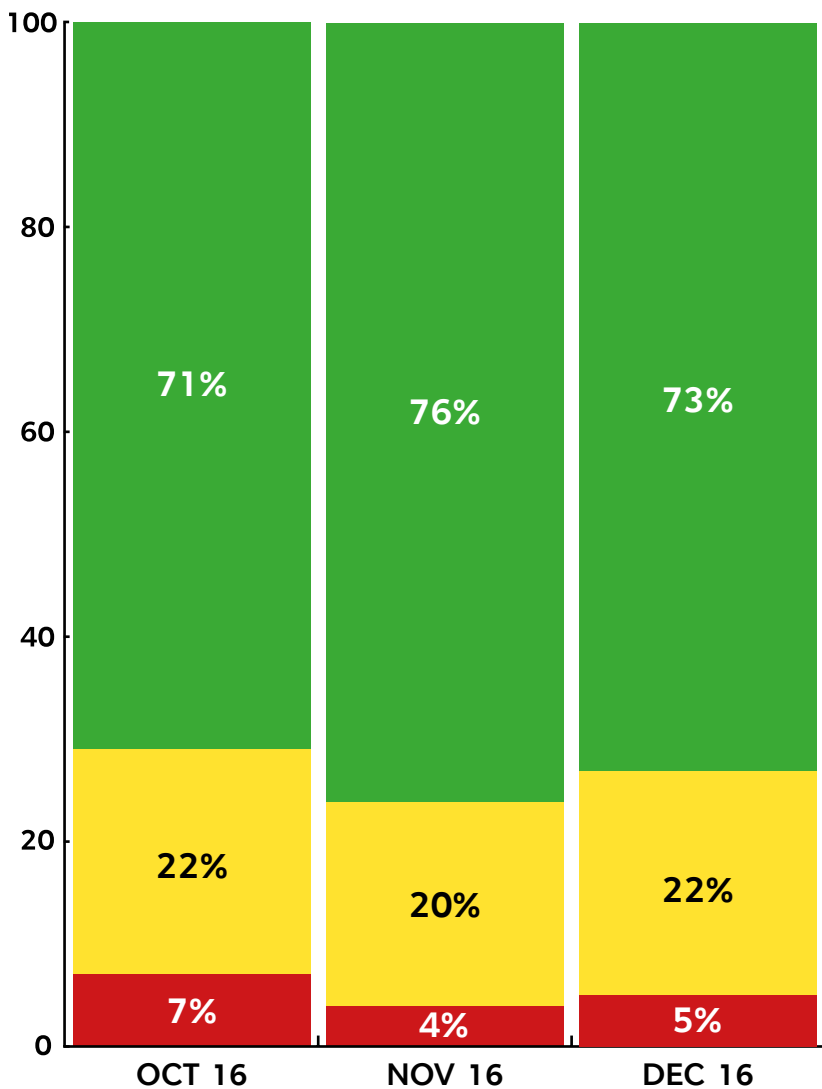
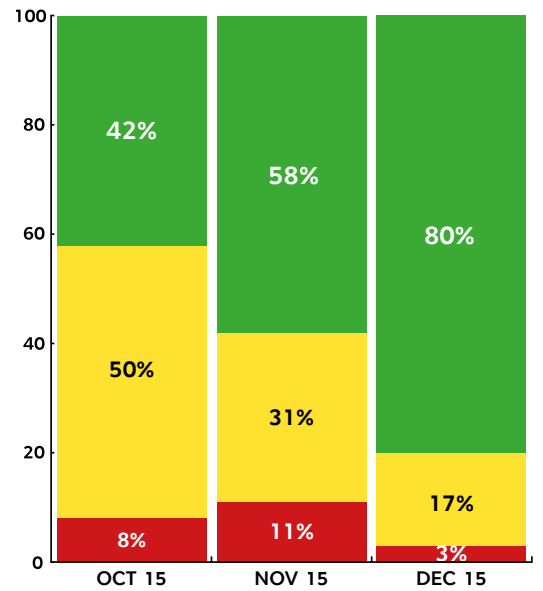


CAMPYLOBACTER TEST RESULTS Q4* 2016

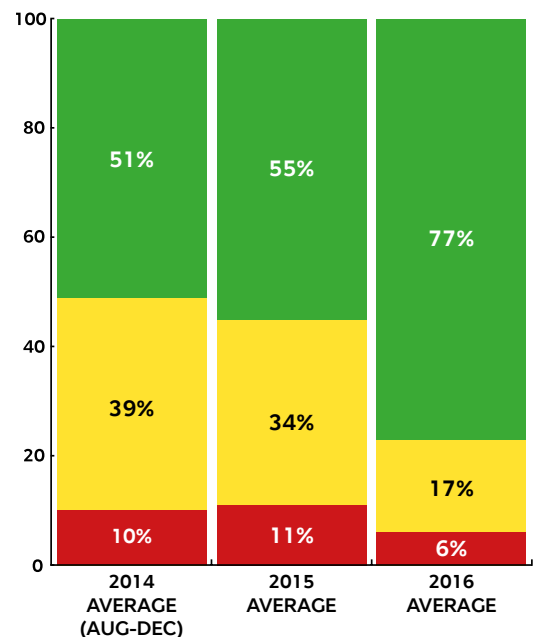
**M&S CAMPYLOBACTER RESULTS -
OCTOBER 2016 TO DECEMBER 2016**



**M&S CAMPYLOBACTER RESULTS -
OCTOBER 2015 TO DECEMBER 2015**



**M&S CAMPYLOBACTER RESULTS -
YEARLY AVERAGES**



Methodology – based on a total sample of 300 M&S chickens (Oct 16 - Nov 16).

The tests are carried out by FSA approved independent testing laboratory Campden BRI.

The chickens tested are taken at random from the shelves of M&S stores across the UK.

